

JULY 2019

FAIRFIELD-SUISUN UNIFIED SCHOOL DISTRICT

# Fairview Elementary School Walking & Bicycling Audit



## Fairview Elementary School Walking and Bicycling Audit

### School Information



Fairview Elementary School (Fairview) is an elementary school within the Fairfield-Suisun Unified School District.

### School Profile

Address: 830 1st Street, Fairfield, CA 94533

Grades: K – 6th

Number of Students: 610



### Access

Pedestrian and bicycle access to and from Fairview is provided via the school entrances along 1st Street.

Vehicular access to and from the campus is provided along 1st Street, a two-lane residential street generally running in the north-south direction. Staff and faculty park in the on-site parking lot, which is closed to non-staff or faculty vehicles during student pick-up and drop-off. The school is located near the four-lane arterials West Texas Street and Pennsylvania Avenue.

There is one primary pick-up and drop-off location used to access school.

**Pick-up and drop-off along 1st Street:** The 1st Street entrance is open before and after school for drop-off and pick-up activities. During the morning drop-off period, parents park their vehicles along 1st Street and either walk their children or watch as they walk on to campus. After school, parents park vehicles along both sides of 1st Street as they wait for their children to come out of school.



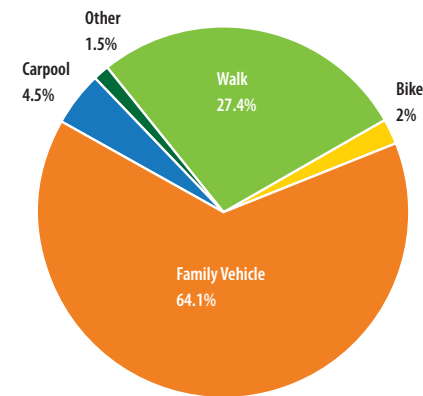
1st Street

## Safe Routes to School Survey

As part of the Solano Transportation Authority's Safe Routes to Schools (SR2S) program student hand tally surveys are conducted regularly to understand the various travel modes students use to get to and from school. The travel surveys are a useful tool in measuring whether SR2S program goals are being met and identifying program resources that can be used to support walking, bicycling, taking transit, and carpooling as means of transportation to school. Surveys are generally conducted twice a year, once in the fall and once in the spring. The surveys are done over a three-day period (Tuesday, Wednesday, and Thursday). During each survey students are asked how they traveled to school that morning, and how they plan to travel back home after school.

Results from the most recent survey conducted during the 2012 school year are shown below

- Approximately 69 percent of students are driven to/from school. 64 percent of students travel in vehicles carrying a single student, referred to as "family vehicle" trips. Five percent of students travel to school by carpool. Generally, there are about 580 students who are driven to school.
- About 29 percent of students travel to/from school in an "active" way. On average 27 percent of students reported traveling either to or from school by walking. Two percent of students travel by bicycling or "other" rolling means (e.g., scooter, skateboard etc.)
- Approximately 34 percent of students travel to/from school using a sustainable mode of travel. 29 percent of students walk, bicycle, or roll to school, and five percent of students carpool. Along with use of public transit or the school bus, these are the travel modes promoted by the SR2S program.



Source: Fairfield-Suisun Unified School District, N=560 students  
Note: Percentages have been rounded and may not add up to 100%.

## Walking and Bicycling Audit

A walking and bicycling audit was held on Tuesday, May 15, 2018. In attendance were Fairview's principal, a representative from the city of Fairfield, one volunteer and representatives from the Solano Transportation Authority's SR2S program. The walk audit was led by Parisi Transportation Consulting traffic engineers with assistance from Alta Planning and Design staff.

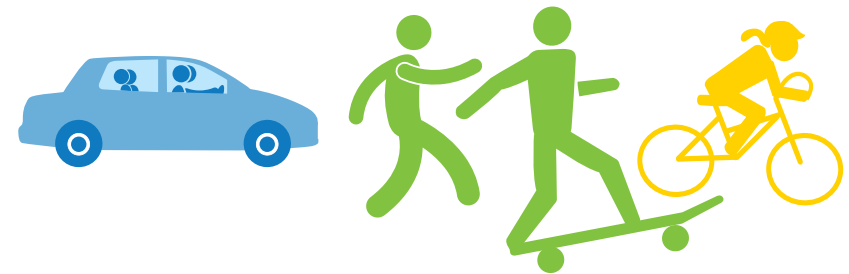
Audit participants made observations during the morning drop-off period as students arrived for class. Observations included driver, bicyclist, and pedestrian travel behavior as students arrived at school. A follow-up visit was conducted by Parisi staff to review afternoon after-school conditions around the school area.

### INFRASTRUCTURE OBSERVATIONS

- Many intersections along 1st Street near Fairview lack any stop signs.

### BEHAVIORAL OBSERVATIONS

- Vehicles illegally enter the staff parking lot exit to drop off their children. The entrance is closed to parents during drop-off and pick-up hours (see photo 10).
- Vehicles block buses along 1st Street after school (see photo 5).
- Vehicles tend to double-park in front of the school entrance.
- Vehicles were observed making illegal U-turns along 1st Street after stopping by the school entrance.
- Parents do not want their children to cross Pennsylvania Avenue because of high vehicle speeds and volumes, so they drive them to school.
- Vehicles were observed making illegal left-turns out of the school parking lot exit.





## Observations



Walk audit participants discuss safety concerns around the school.



A crossing guard assists students in crossing the street safely at the intersection of 1st Street and Kentucky Street.



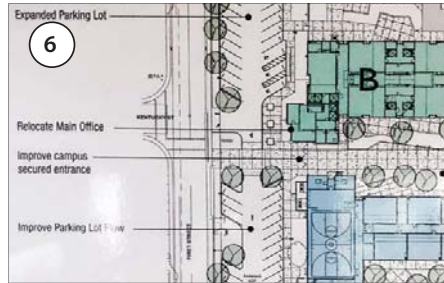
Vehicles drop-off students at the corner of 1st Street and Kentucky Street.



Kentucky Street has significant vehicular congestion.



Vehicles park in red zones near school to drop off and pick up students.



The school and its on-site parking lot will be renovated.



Existing crosswalks could be upgraded to better alert drivers to pedestrians.



Some vehicles make illegal left turns out of the school parking lot.



Cracked sidewalks near school present potential tripping and accessibility hazards.



Vehicles stop in front of and even turn into the on-site school parking lot exit.



A crossing guard assists students in crossing the street safely at the intersection of Hawaii Street and 1st Street.



Sloped sidewalks surround the school campus.

## Safe Routes to School Improvement Recommendations

An important element of the SR2S program is providing infrastructure improvements that support and encourage safe walking and bicycling to and from school. This Walk Audit Report includes a series of recommendations for transportation infrastructure improvements around Fairview Elementary. These recommendations are based on observations made during the walking and bicycling audit, a post-audit engineering review, and a review of concerns raised by walk audit participants. The recommendations have been classified based on ease of implementation:

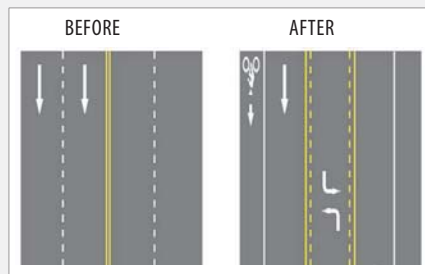
- **Short-term improvements** are lower cost improvements that can typically be implemented within a year.
- **Mid-term improvements** are improvements that may require additional planning efforts and funding and can typically be implemented within a three-year range.
- **Longer-range improvements** are substantial infrastructure improvements that would require additional funding and planning and can typically be implemented in a three to five-plus year range.

These improvements are summarized in the figure on the next page.

### TOOLBOX OF POTENTIAL IMPROVEMENTS



*Rectangular Rapid Flash Beacons (RRFB) increase yield compliance at uncontrolled crossings.*



*Road diets calm traffic provide space for bicyclists, and can provide pedestrian refuges.*



*Stop bars set back from crosswalk provide additional buffer between vehicular traffic and pedestrians.*



*Replace obsolete or inappropriate school area signs to keep school traffic control up to date.*



*Red curb paint designates areas where parking is prohibited.*



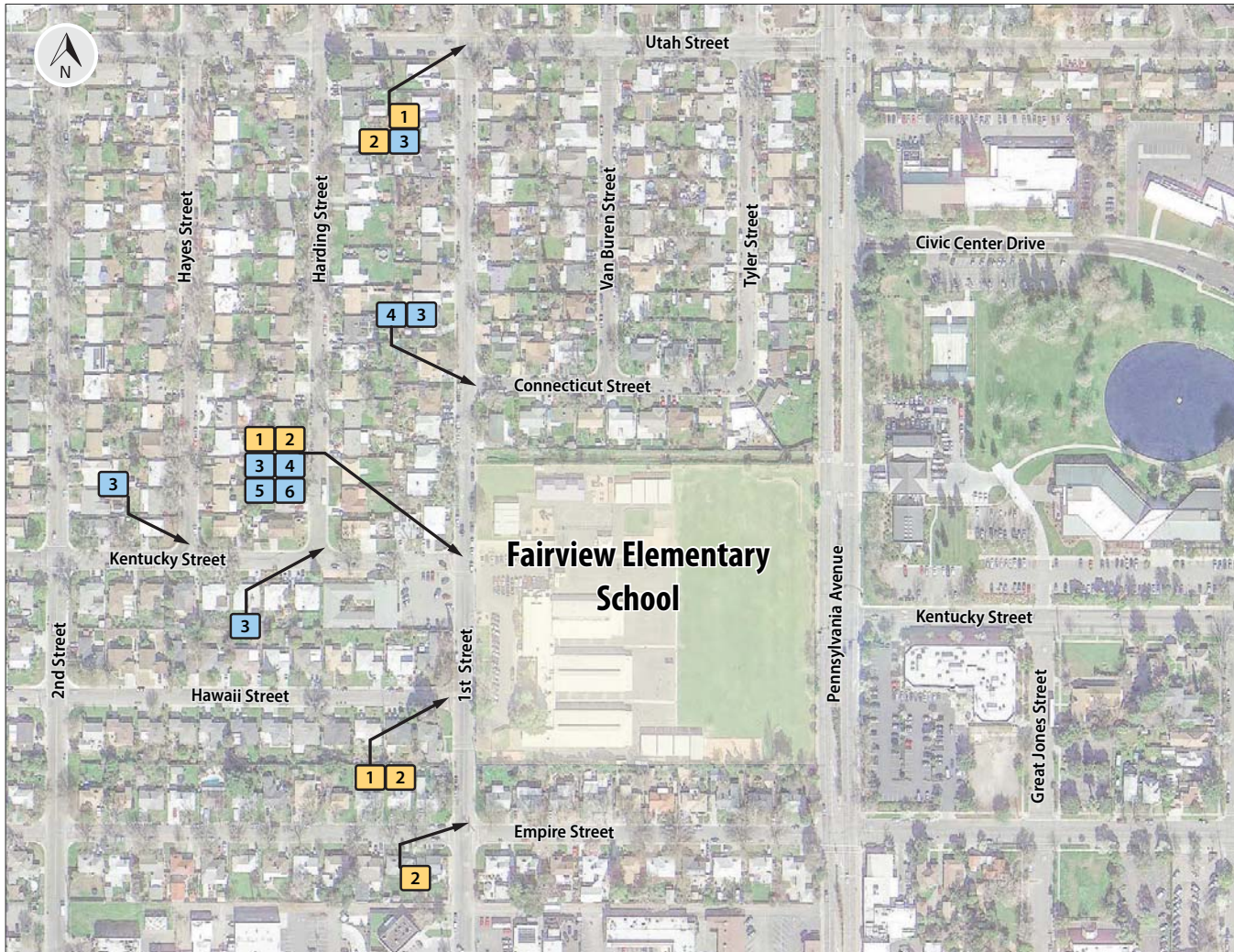
*Curb ramps provide access to disabled pedestrians and parents walking with strollers.*



*Curb extensions shorten pedestrian crossing distance and enhance visibility.*



## Potential Safe Routes to School Improvements at Fairview Elementary School, Fairfield



### LEGEND

#### Short-term Improvements

- 1** Install double-sided school crosswalk signage
- 2** Install 25' of red zone striping on both sides of crosswalk

#### Mid-term Improvements

- 3** Upgrade or install curb ramps to meet ADA compliance
- 4** Consider tightening corner curb radii
- 5** Consider construction of bulb-out
- 6** Install Assembly D school area crosswalk signage

